

NUMBER: SB 550-80-001, Rev A
MODEL: ECLIPSE 550[®]
SUBJECT: Starter Generator TSO Label Correction

Mandatory
www.ECLIPSE.aero

1. PLANNING INFORMATION

A. Effectivity

The following aircraft with Starter Generator (S/G) model 200SGL149Q-3-1 installed, are affected by this Service Bulletin.

Aircraft Serial Number	S/G Serial Number
550-0263	S00001XL
550-0265	S00005XL, S00010XL
550-0268	S00003XL, S00009XL
550-0269	S00006XL, S00012XL
550-0270	S00024XL, S00028XL
550-0271	S00002XL, S00023XL
550-0272	S00021XL, S00026XL
505-0273	S00011XL
550-0274	S00004XL, S00031XL
550-0275	S00007XL, S00034XL
550-0276	S00016XL, S00029XL
550-0277	S00018XL, S00030XL
550-0278	S00037XL, S00042XL
550-0279	S00041XL, S00043XL
550-0280	S00015XL, S00038XL
550-0282	S00035XL, S00040XL
550-0283	S00014XL, S00027XL
550-0284	S00025XL, S00033XL
550-1001	S00008XL, S00044XL
550-1002	S00017XL, S00036XL
550-1003	S00013XL, S00039XL
550-1004	S00019XL, S00022XL
550-1005	S00046XL, S00047XL
550-1006	S00032XL, S00045XL
550-1007	S00054XL, S00055XL
550-1008	S00052XL, S00053XL
550-1009	S00049XL, S00051XL
550-1010	S00050XL, S00056XL

B. Reason

This bulletin removes the TSO specification number from the Starter Generator data plate.

C. Description

This bulletin removes the TSO specification number from Starter Generator's that were mistakenly marked as having a TSO in accordance with part 45.15(2)(b).

D. Relevant Publications

06-123838, Eclipse 550 AMM, current revision

E. Compliance

Eclipse Aerospace Incorporated considers this to be a mandatory procedure that must be accomplished by the next 300 hour / 24 month inspection.

F. Approval

This Modification Bulletin is based on engineering data that is FAA-approved, and the modification herein complies with the applicable regulations.

A. Labor Requirements

The following information is for planning purposes only.

(1) Estimated labor hours to perform:

Suggested number of personnel: 1

Modification: 1 Hour per S/G

Total labor hours: 1-2 Hours

The above is an estimate based on properly equipped and experienced personnel complying with this Service Bulletin. Actual labor hours may vary depending on workforce experience, concurrent maintenance, discovery of other discrepancies, etc.

(2) Qualification of personnel:

A person properly authorized to perform aircraft maintenance under 14 CFR 43 or equivalent approved by the Civil Aviation Authority having jurisdiction.

B. Weight and Balance Change

N/A

C. Electrical Load Data Change

N/A

D. Software Accomplishment Summary

N/A

E. References

06-123838, Eclipse 550 AMM, current revision

F. Publications Affected

N/A

G. Export Control

These commodities, technology or software were exported from the United States in accordance with the Export Administration Regulations. These commodities, technology or software are intended for use only in the End User's country. An export license from the U.S. Department of Commerce may be required before these products can be re-exported, transferred, transshipped on a non-continuous voyage, or otherwise disposed of in any other country, either in their original form or after being incorporated into an end item. Diversion of this end-item or its use contrary to any applicable U.S. government license or to U.S. law is prohibited.

2. MATERIAL INFORMATION

A. Materials

N/A

B. Tooling

N/A

C. Consumables

N/A

D. Interchangeability/Intermixability of Parts

N/A

E. Part Re-identification

N/A

F. Cost

Contact Eclipse Aerospace Customer Care for information and availability.

3. ACCOMPLISHMENT INSTRUCTIONS

A. Job Set-Up

- (1) Make the aircraft safe for maintenance. Refer to AMM 20-00-01 MAKE SAFE FOR MAINTENANCE.
- (2) Get access to S/G as follows (refer to AMM-06-50-00-051-801 – AIRCRAFT ACCESS PANELS for panel locations):
 - (a) For left S/G, remove 411 CB - Left Lower Nacelle Cowl.
 - (b) For right S/G, remove 412 CB - Right Lower Nacelle Cowl.

B. Procedure

CAUTION: DO NOT DAMAGE SURROUNDING AREA

- (1) Using best shop practice, abrasively remove "TSO-C56b" Ink/Paint marking from the SPECIFICATION No. area of the data plate.
- (2) Apply a chemical conversion coating to the cleaned area. Refer to AMM-20-09-00-051-801 – Aircraft Finishes.

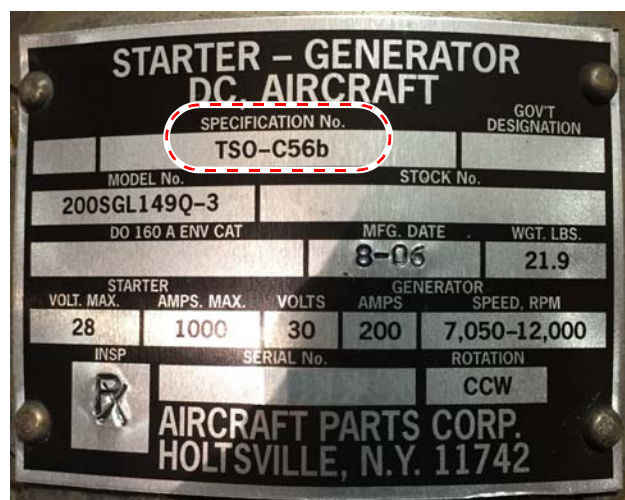


Figure 1. S/G Data Plate

C. Job Close-Up

NOTE: Insure all foreign objects and tools have been removed prior to installing panels.

- (1) Remove all tools, equipment, and unwanted material from work area.
- (2) Install access panels as follows (refer to AMM-06-50-00-051-801 – AIRCRAFT ACCESS PANELS for panel locations):
 - (a) For left S/G, install 411 CB - Left Lower Nacelle Cowl.
 - (a) For right S/G, install 412 CB - Right Lower Nacelle Cowl.
- (3) If all other maintenance is complete, return the aircraft to service. Refer to the AMM 20-00-02 RETURN TO SERVICE (AFTER MAINTENANCE).

D. Limitations and Procedures

N/A

E. Parts Disposition

N/A

4. RECORD OF COMPLIANCE

Upon completion of this Modification Bulletin, make an appropriate maintenance-record entry specifying the Modification Bulletin number.

5. NOTIFYING ECLIPSE AEROSPACE

On completing this Modification Bulletin, the operator/maintainer shall complete the attached Compliance Record and send it to Eclipse Aerospace via regular mail, fax, or e-mail.

Mailing Address	Eclipse Aerospace Incorporated ATTN: Service Engineering 2503 Clark Carr Loop SE Albuquerque, NM 87106
Fax	1-505-241-8802
E-mail	sbcompliance@eclipse.aero

[Intentionally Blank Page]

